

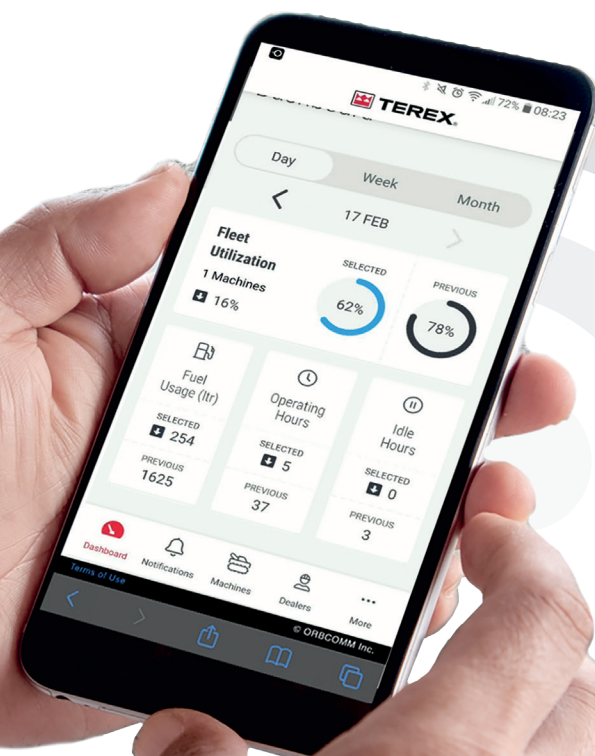


T LINK™
FLEET MANAGEMENT

PLAN, RUN AND MANAGE YOUR FLEET TO GROW YOUR BUSINESS

T-Link is the MDS remote monitoring, fleet management system that combines your machines' inbuilt CANbus control system with satellite positioning and telematics software.

From the fleet management fundamentals of knowing the hours and location of your machine to sending machine specific alerts and tracking machine production, T-Link can help you remotely monitor and manage your MDS fleet and grow your business.



WHY USE T-LINK?

T-Link enables you to stay connected and keep track of your equipment, monitor work progress, manage logistics, access critical machine information, analyse and optimise machine performance and perform remote operator support.

T-LINK provides a number of key features:

- ✓ Enhanced machine uptime
- ✓ Enhanced machine management
- ✓ Enhanced security and visibility
- ✓ Minimise costs

DATA AT YOUR FINGERTIPS, 24/7

The T-Link system is connected to a network of global positioning satellites allowing operators to access and download machine data regularly via cellular and satellite once the system is activated on the machine.

To access machine data, simply log onto the web-based portal and download the data that you require for indepth analysis and comparison.

HOW DOES T-LINK WORK?



The system operates on dual-band networks that utilises both cellular and global positioning satellites (GPS) technologies.



The T-Link components and software on your machine collects machine data and transmits it to the satellite.



The communication network transmits information to the T-Link data centre.



The T-Link data centre stores harvested data for the life time of the equipment.



Data can be accessed from the machine via the internet from the T-Link data center on your pc, smart phone or tablet.

YOUR VIRTUAL TECHNICAL REMOTE DEALER SUPPORT

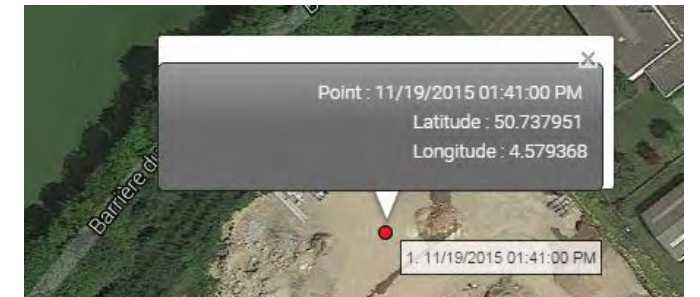
Not only can you monitor the productivity and maintenance of your machine. Your local dealer, on request, can access your machine on the T-Link system to offer enhanced levels of support. Through remote diagnostics your local dealer can analyse the machine data and even prevent a potential breakdown and production disruption.



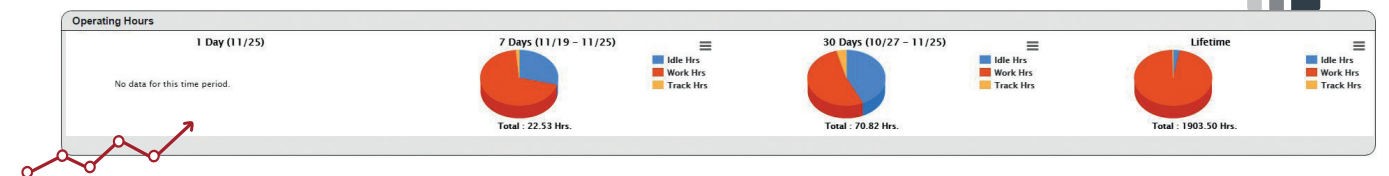
MACHINE LOCATION ACTIVITY

Are you sure your machine is where it's supposed to be?

T-Link utilises a network of Global Positioning Satellites (GPS). The current position of your machine can be monitored using the map or latitude and longitude references. This information will assist you with both logistics and scheduled maintenance.



WORKING STATUS REPORT



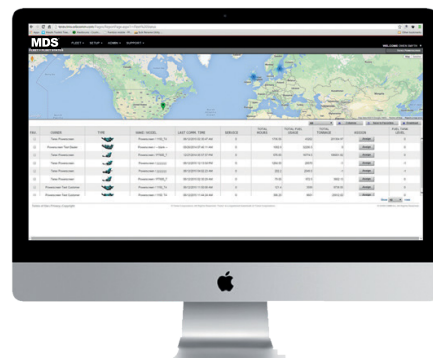
T-link provides you with an accurate working record in near real time of the operational performance of your machine and helps you to monitor the health of your machine and schedule preventative maintenance. **The informational reports that can be downloaded include:**

- ✓ Location
- ✓ Cautions and Alerts
- ✓ Working Status
- ✓ Engine Work Time
- ✓ Engine Idle Time
- ✓ Maintenance Replacement & Notifications

T-LINK OVERVIEW

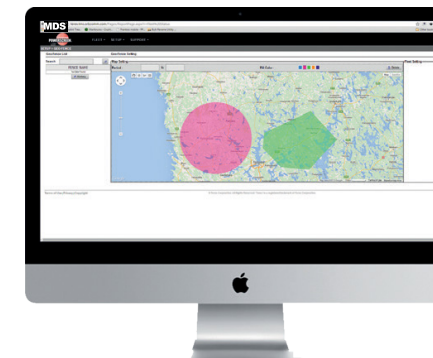
FLEET OVERVIEW

- The status of each machine at a glance (on/off/idle/error message etc.)
- Comprehensive information on the GPS location. Customisable interface to display the information that's important to you.
- Customisable date range.
- Immediate notification of critical statuses.



GEOFENCING

- Alerts if machine leaves a pre-determined area.
- Time fencing capability for alerts if machine operates outside preset times.

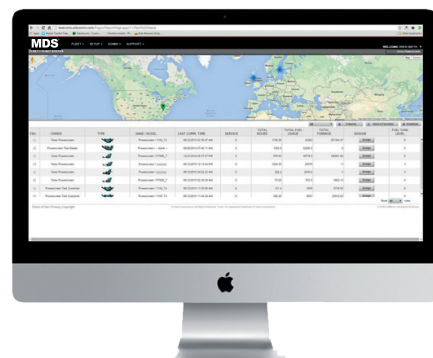


UTILISATION

- Display of time spent working vs time spent tracking or idling (daily, weekly or monthly).
- Export available in common formations for data compiling (JPEG, PDF, PNG).
- Useful for application and fleet planning.
- Monitor and increase overall machine utilisation.

ALARMS

- Faults are immediately located and relayed, allowing you to employ preventative maintenance and avoid costly down-time.
- General mentioning of machine health.
- More accurate fault diagnosis.
- Better utilisation of service engineers.



Ireland

Drummond, Magheracloone
A81 TE82, Carrickmacross
Co. Monaghan, Ireland
Tel: +353 42 966 7899
Email: mds.info@terex.com

USA

Louisville
11001 Electron Drive,
Louisville, Kentucky, 40299 USA
Tel: +1 502 736 5233
Email: mds.info@terex.com

www.terex.com/mds



The material in this document is for information only and is subject to change without notice. MDS assumes no liability resulting from errors or omissions in this document, or from the use of the information contained herein. Photographs are for illustrative purposes only; some or all of the machines in the illustrations may be fitted with optional extras. All machines are CE Approved.