



Product Overview

Feeding / Conveying / Screening / Shredding / Sorting / Separation

Terex Recycling systems specialises in the design and build of stationary and modular recycling systems, ultimately providing customers with a “one stop shop” to meet their recycling needs.



This new business unit will complement Terex’s existing environmental lines: Terex Ecotec (mobile wood processing, biomass and recycling equipment) and CBI (horizontal grinders, industrial chippers, flail debarkers and stationary systems). However, the approach of Terex Recycling

Systems is more project focused in comparison to traditional machinery sales.

Together, these businesses will help municipalities, governments and contractors across the globe cope with the increasing demands of processing waste from various streams.



Key Applications:

The versatility of our products allows us to cater for a number of applications including:

Construction & Demolition Waste

C&D waste is made up of the debris arising from construction and demolition projects. It generally contains a wide variety of heavy materials such as brick, concrete, sand and soil amongst many others. If correctly processed, these can be recovered and used as secondary aggregates, fuel or recycled. For example, wood can be used as an alternative fuel source and metals which have a high resale value for recycling.

Our modular equipment is designed to withstand the harsh and abrasive nature of construction and demolition waste. This gives operators maximum uptime, whilst offering efficient separation of materials to maximise the return on investment.

Commercial & Industrial Waste

C&I waste arises from manufacturing and retail operations. It generally consists of light packaging materials such as card, paper and plastic.

Our modular equipment is designed to process large volumes of commercial waste efficiently and offer the high recovery and purity rates to maximise return on investment.

Wood Waste

Waste wood comes from a variety of sources including construction, demolition and manufacturing. It is often separated at source but can also arise from sorting processes of other mixed waste streams.

Our modular equipment is designed to process waste wood efficiently to the operators required specifications with minimum operating costs.

Alternative Fuels

Waste that is not suitable for recycling can be used as a substitute for fossil fuels in the generation of electricity, usually known as RDF (refuse derived fuel).

Our modular equipment is designed to process residual waste efficiently and produce high quality products to the operators required specifications with minimum operating costs.

Other

Our modular equipment is versatile and can be utilised in different configurations to suit a number of other applications, such as:

- Compost/Organics (Garden/Kitchen waste)
- MSW (Municipal solid waste)
- IBA (Incinerator bottom ash)
- DMR (Dry mixed recyclables)

FEEDING

TWF-412
Waste Feeder



Heavy duty 4m (13' 1") x 1.2m (3' 11") inclined belt feeder with 5 cubic metre (6.5 cubic yard) hardox hopper.

TOF-414
Organics Feeder



Horizontal 4m (13' 1") x 1.4m (4' 7") belt feeder with 5 cubic metre (6.5 cubic yard) hopper with integrated auger.

SEPARATION

TAS-150
Air Separator



1.5m (4' 11") and used for the separation of waste by density. Optional material spreader module to maximise separation efficiency.

TAB-120
Air Blower



1.2m (3' 11") wide and for the use of separating waste by density. Modular mount system allows positioning at various locations in plant to best suit your application.

TMS-80
Overband Magnet



800mm (2' 7") wide Overband Magnet for the recovery of ferrous metals.

TMS-120
Overband Magnet



1.2m (3' 11") wide Overband Magnet for the recovery of ferrous metals.

CONVEYING

Modular Waste Conveyor

TWC-80 / TWC-120 / TWC-160

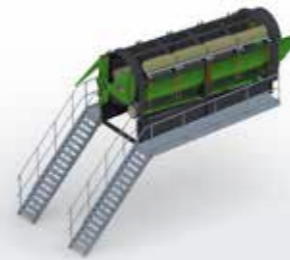
800mm (2' 7") wide / 1.2m (3' 11") wide / 1.6m (5' 3") wide



Modular Waste Conveyor with an electric drive system.

SCREENING

TTS-720
Trommel Screen



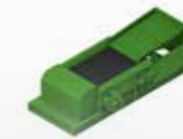
7m (23') long x 2m (6' 7") diameter drum which can be used to separate various waste materials into the required screen fractions.

TMS-160
Overband Magnet



1.6m (5' 3") wide Overband Magnet for the recovery of ferrous metals.

TES-150
Eddy Current Separator



1.5m (4' 11") wide and is for the recovery of non-ferrous metals. It includes an adjustable splitter chute. Options include vibrating pan feeder and drum magnet.

SORTING

TPS-120
Picking Station



1.2m (3' 11") wide Picking Station with a double sided picking conveyor, configurable from 1 bay upwards.

TCS-516
Vibrating Screen



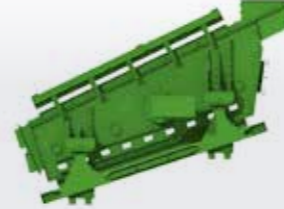
5m long (16' 5") x 1.6m (5' 3") wide combi-screen that combines 3D and flip-flow screening.

TCS-616
Vibrating Screen



6m (19' 8") long x 1.6m (5' 3") wide combi-screen that combines 3D and flip-flow screening.

TCS-716
Vibrating Screen



7m (23') long x 1.6m (5' 3") wide combi-screen that combines 3D and flip-flow screening.

Heavy Picker
Robotic Sorting



Multipurpose waste sorting robot for large and bulky waste. It can sort several high-purity fractions simultaneously with the help of heavy-duty arms, various sensors and artificial intelligence.

Fast Picker
Robotic Sorting



The perfect AI-based waste sorting robot for light packaging materials that will fit easily into your existing processes. With its high speed it is sure to maximise material recovery.

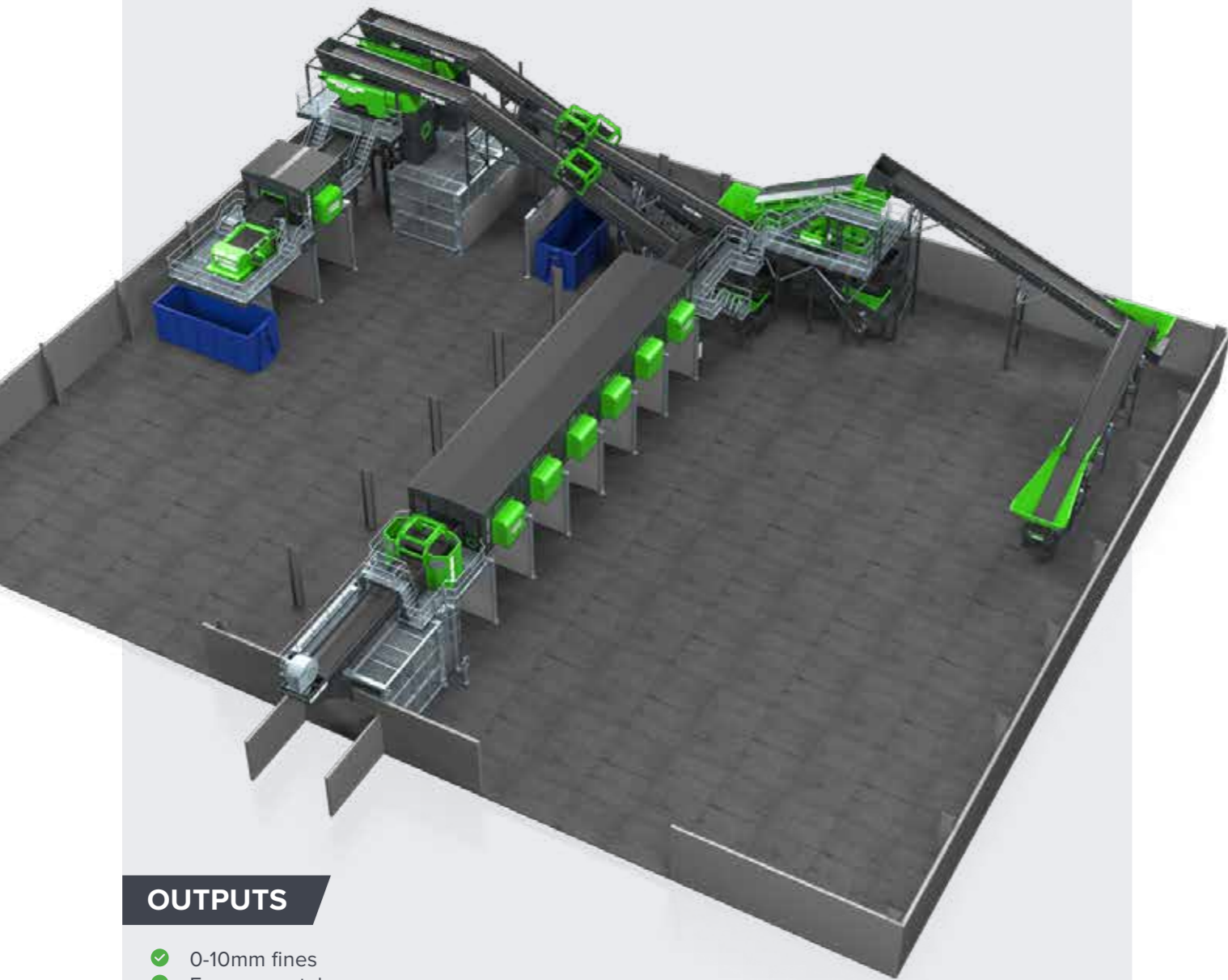
Coming Soon...

We are continually expanding our product range and we will be introducing **Moving Floor Feeders, Special Conveyors, Shredders and Optical/Robotic Sorting** soon.

CONSTRUCTION & DEMOLITION WASTE



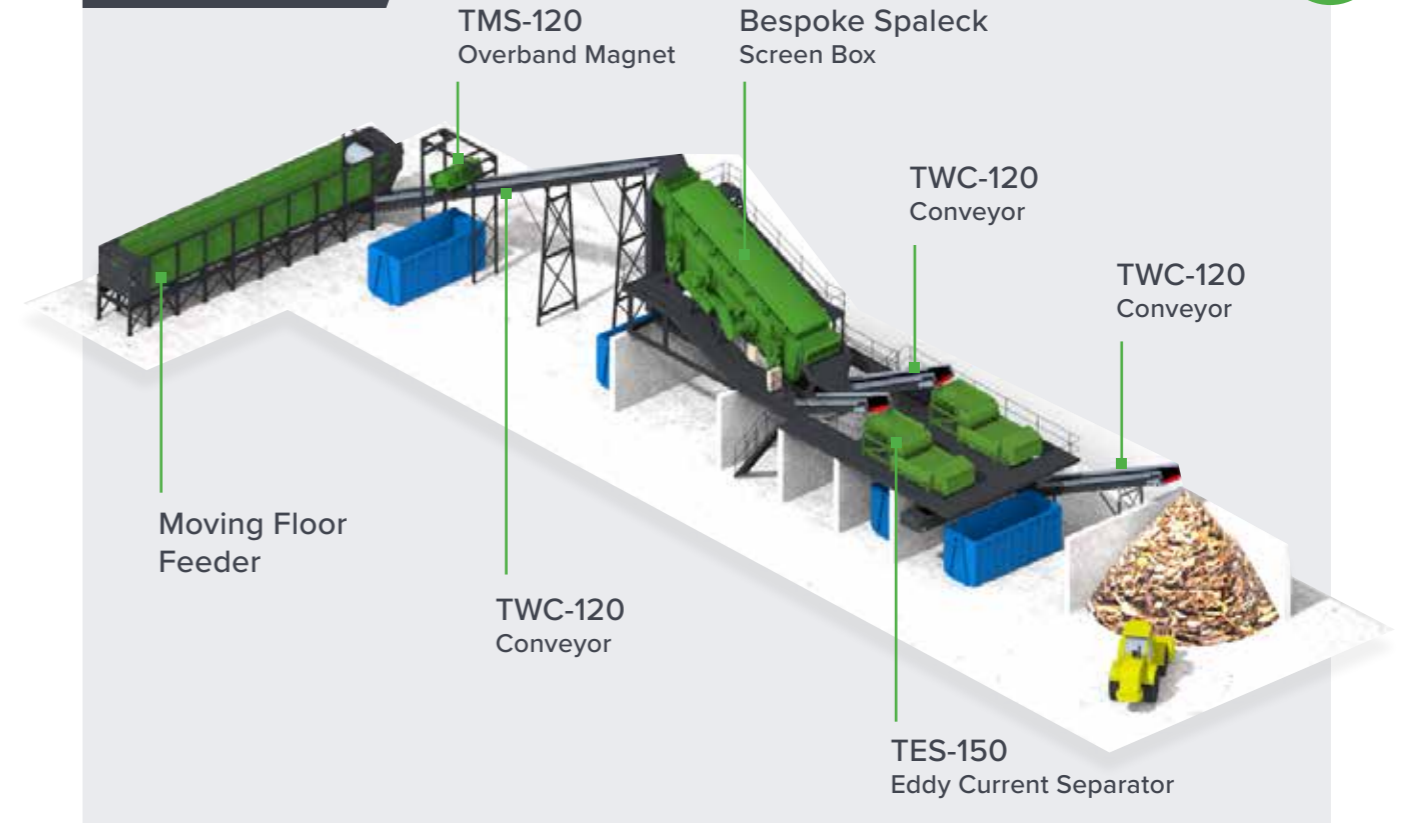
This plant was designed and installed to increase the processing capacity of a site and recover cleaner products of higher value whilst not adding to the manual labour requirements. TRS developed a process which incorporated advanced mechanical separation which would increase the processing capacity and recover products of higher purity than what was currently being achieved.



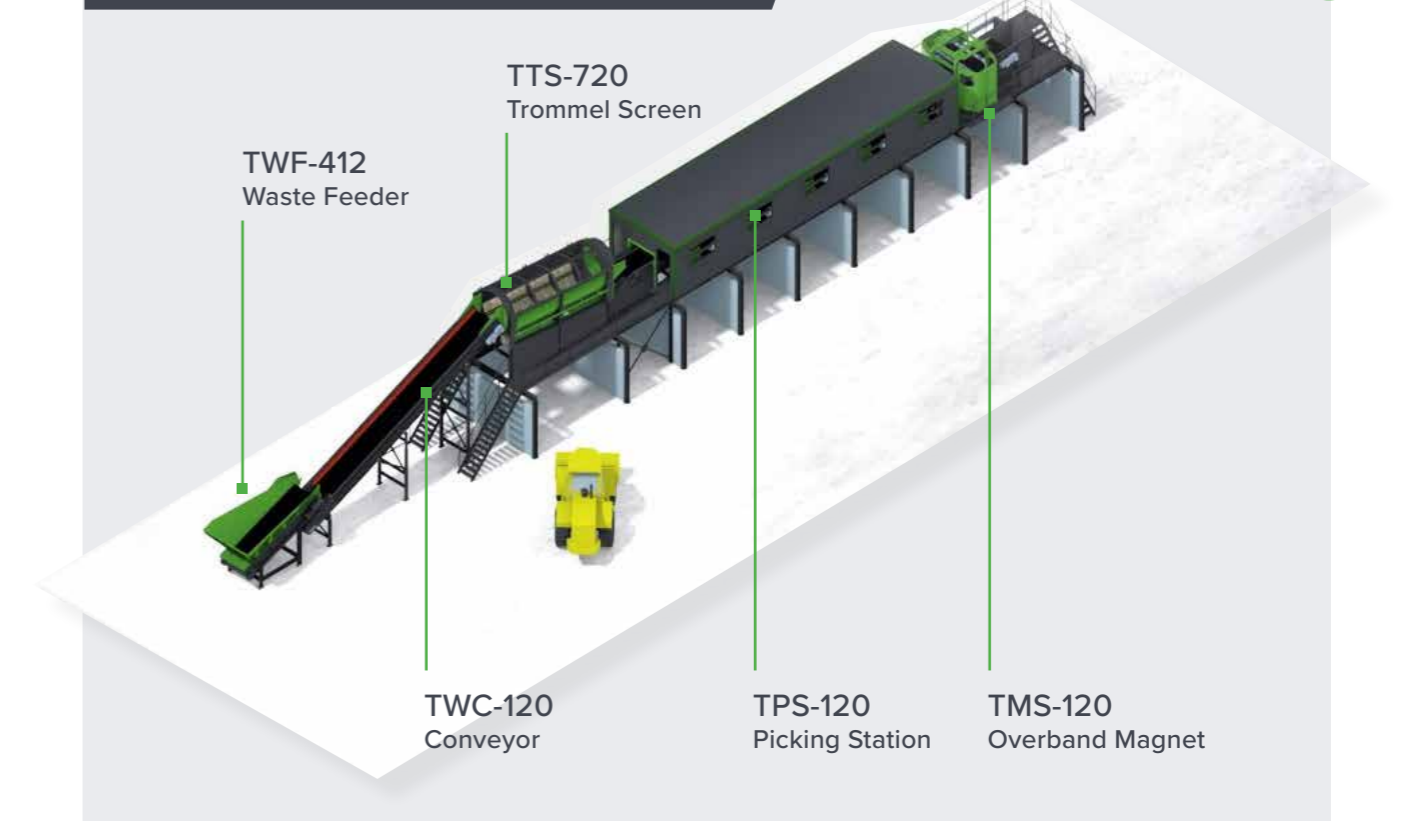
OUTPUTS

- ✔ 0-10mm fines
- ✔ Ferrous metals
- ✔ Non-ferrous metals
- ✔ Clean 10-100mm heavy fraction (inert)
- ✔ Clean +100mm heavy fraction (inert)
- ✔ Wood
- ✔ Plastic
- ✔ Paper & card

WOOD WASTE



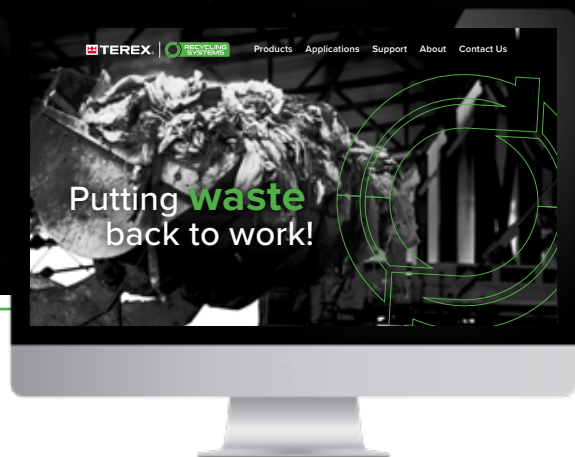
COMMERCIAL & INDUSTRIAL WASTE



NOTE: These are examples of popular plant setups to demonstrate how our modular approach to design and build works. Please contact us to discuss your specific requirements.

Visit our website for more information
about our plants, products and services.

terex.com/recycling



32 Farlough Road
Dungannon
Co. Tyrone
Northern Ireland
BT71 4DT

Tel: +44 (0) 28 8771 8500

Email: recyclingsystems@terex.com



The material in this document is for information only and is subject to change without notice.

Terex Recycling Systems assumes no liability resulting from errors or omissions in this document, or from the use of the information contained herein.

Due to continual product development we reserve the right to change specifications without notice. Product performance figures given in this brochure are for guidance purposes only, this information does not constitute an expressed or implied warranty or guarantee, but shows test examples. These results will vary depending on application. Photographs are for illustrative purposes only; some or all of the machines in the illustrations may be fitted with optional extras. Please check with your Dealer for details on optional extras.

Published and Printed in March 2023. All machines are CE Approved.

© Terex Corporation 2023